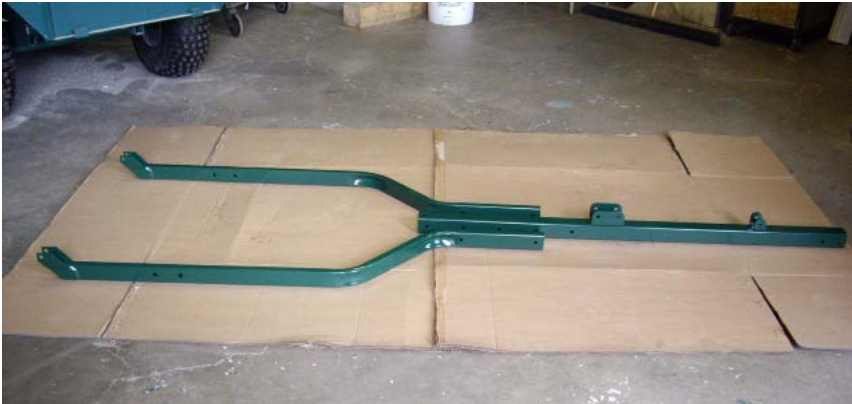


MUTS & MIGHTY MUTS TRAILER ASSEMBLY INSTRUCTIONS

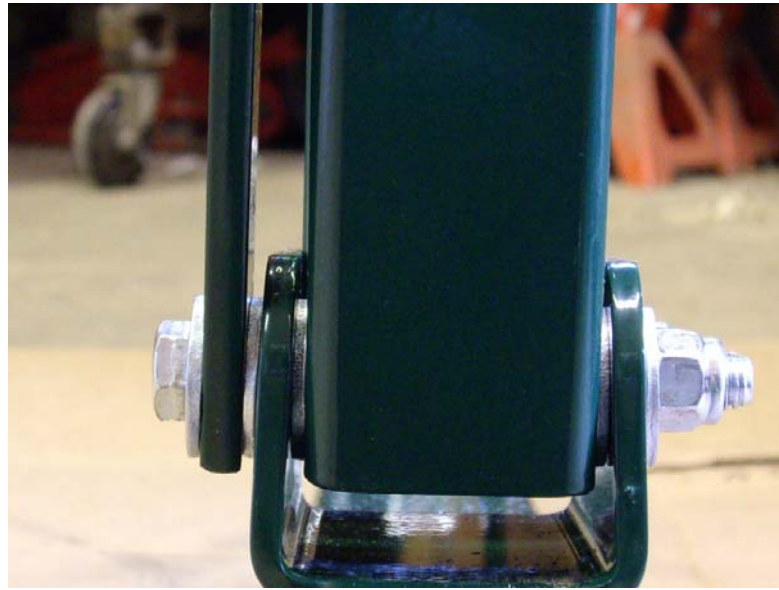
1. Unpack crate and inspect for all components and possible damage.
2. There are 5 holes at one end of the draw bar. Lay the 2 bent 1" x 2" rectangular tubes on either side of the draw bar and align them with holes 2 and 4 of the draw bar. Insert 2- 3/8" x 4.5" bolts and secure.
3. Place the axle assembly under the bent rectangular tubes and bolt securely in place. The axle should be towards the back for the MUTS and towards the front for the MIGHTY MUTS



4. Insert the 2 walking beam assemblies into the ends of the axle (MIGHTY MUTS only).
5. Slide the keeper bar through the walking beam assemblies and the axle and place a washer on each end of bar and clip into place. (MIGHTY MUTS only)



6. Attach winch to winch mast using 2 #10x70mm(3/8"x2 3/4") bolts. Secure tightly.
7. Attach winch mast to mast support plate on draw bar using 1 #10x85mm(3/8"x3 3/8") bolt.
8. Attach 2 diagonal braces from mounting plate on draw bar to winch mast using 2 #10x30mm(3/8"x1 3/8") bolts. Secure tightly.
9. Lay pulley mast on draw bar so the pulley is over the axle.



10. Align holes and insert #10x85mm(3/8"x3 3/8") bolt. The bolt will go through, a washer, the lock bar, a washer, the support base, a washer, the base of the pulley mast, a washer, and the other support base.
11. Tighten both mast bolts until there is no side movement on the winch mast and the pulley mast can stay upright on its own. Move the lock bar to the vertical position. If necessary give the top of the lock bar a short sharp pull away from the mast so it will clear the masts.
12. Attach ball coupler using 2 #10x75mm(3/8"x3") bolts. Secure tightly.
13. Attach wheel assemblies to hubs. Secure tightly. Adjust air pressure in tires to 6 lbs.
14. Under carriage is now complete.
15. Align the 2 – 1"x2" long channels (57 3/4" or 69 3/4") so that the hinge holes are at the same end.
16. Attach the front 1" x 2" channel (26") with the lifting bracket assembly to the ends of the long channels and farthest from the hinge holes
17. Attach the rear 1" x 2" channel (26") with the ball receiver to the other end of the long channels. Use 4 #10x25mm(3/8"x1") bolts. Tighten only enough to remove slack in bolt.
18. The 1" x 1" bent tubes fit on the lower inside face of the 1" x 2" channels.
19. There are 4 end panel stops (2 for each end) and these are bolted to the top of the 1" x1" tube at the 2 outer most holes that attach the 1" x 1" tube to the channel. Tighten securely.





20. Place the box bottom inside the end panels and align holes. Insert the #6 x 12mm (1/4" x 1/2") truss head bolts from the inside of the box. Attach nut but do not tighten.
21. Attach 4 triangular pieces to each outside edge of box bottom
22. Place both fenders so they line up with the holes on the box bottom. One fender has a logo on it. This logo sits on the front left side of the completed trailer. Insert the remaining bolts in all the holes. Do not tighten.
23. Begin tightening the topmost/outermost bolts to the end frames, then work down to the box bottom. Tighten the bolts that attach the fenders to the box bottom.
24. Tighten the bolts that attach the end frames to the channels.
25. Slide the end panels into place. Do not force panels down if they bind. Remove and re align panel edges by hand so they slide down with only slight resistance.
26. Lift assembled box and place on under carriage.
27. Align hinge holes in channel with hinge holes on carriage and insert 2 – #10 x 50mm (3/8" x 2") clevis pins.
28. Attach hook to lifting bracket.
29. The long clevis pin is used whenever there is a need to secure the box to the draw bar or the lock bar.
30. Assembly is now complete.

The MUTS and MIGHTY MUTS SAFETY AND FEATURES GUIDE

Congratulations on your purchase of a Multi Use Trailer System (MUTS or MIGHTY MUTS). This trailer has been designed and built to very high standards and with proper use and maintenance will give you many years of great service.

Warning: Read, understand, and follow all instructions before operating this device. Failure to do so may result in serious personal injury and/or property damage.

Edgar Enterprises and its authorized representatives, assume no responsibility for any damage or injury caused from the use of this trailer or it's accessories outside of the 1 year limited warranty on materials and workmanship. Due to the extreme variations in terrain, operating conditions, and operator skills it is the responsibility of the user to determine safe working limits with this trailer in conjunction with this guide.

SAFETY FIRST

Get to know your trailer. Explore all the features and operating procedures under no load conditions in the terrain in which you intend to use it. Gradually add increasingly larger loads to become familiar with the handling characteristics of the trailer and your ATV.

Always maintain a firm grip on the winch handle when operating it. Never try to grab a spinning winch handle should it slip from your grasp. To do so could result in serious hand/wrist injuries.

Always maintain a safe distance when raising or lowering the box or when using the accessories with the winch. Should an accident occur, the box or accessory could drop in an uncontrolled manner resulting in serious injury.

Never wear loose clothing, jewelry, etc. when operating a winch.

Balance loads centrally over the trailer axle.

Do not overload the trailer. A safe load is dependent on the terrain, the power of your ATV, and your skills.

Ultimately, safe operation of this trailer rests with you, the operator.

INSTRUCTIONS FOR USE OF THE MUTS and MIGHTY MUTS FEATURES

1. **Dump:** Dump all loads on level ground. Remove rear end panel and rear ball hitch if installed. With the winch, raise the box to its full dump angle. For safe operation, stand clear of the box when raised. Drive forward until box is empty. Lower box.
2. **Spreader:** Load trailer with dry and or granular material free of roots and other fibrous material. Raise box just slightly above the shear point (material “landslides”) of the material being spread. Raise tailgate to desired opening. Drive forward at a slow, uniform speed.
3. **Oversize Loads** Remove front and rear end panels. Place load so that it is centered over the axle but does not interfere with the turning of your ATV. For convenience, the pulley and winch mast and diagonal brace can be removed. Secure load and transport.
4. **Lock Bar:** Remove front and rear end panels. Rotate lock bar towards box and raise box until the hole in lock bar aligns with the holes in the lifting bracket and insert locking pin to secure box at this angle. Hook the top of one of the end panels to the support brackets at the rear of the trailer to create a ramp. Remove hook from lifting bracket. Remove pulley assembly from its mast and slide toward hook. Draw out cable and attach to object to be loaded. Always leave 5 turns of cable on the winch drum for optimum winch operation. Winch object into trailer box and secure if necessary. Attach hook to lifting bracket. Remove locking pin and lower box until it rests on the chassis.
5. **Maintenance and Storage:** Regularly inspect your trailer for wear and damage, especially the winch cable and hinge points. Repair or replace as required. Periodically grease the hinge points and the pulley wheel.

To control any rust, clean and sand affected areas and cover with metal paint. For longer life store your trailer out of the elements whenever possible.

Only the MUTS can be stored in a vertical position if space is limited. Lock the box to the drawbar. Remove front end panel and lower pulley mast into the box. Lift the drawbar until the MUTS is in the vertical position.